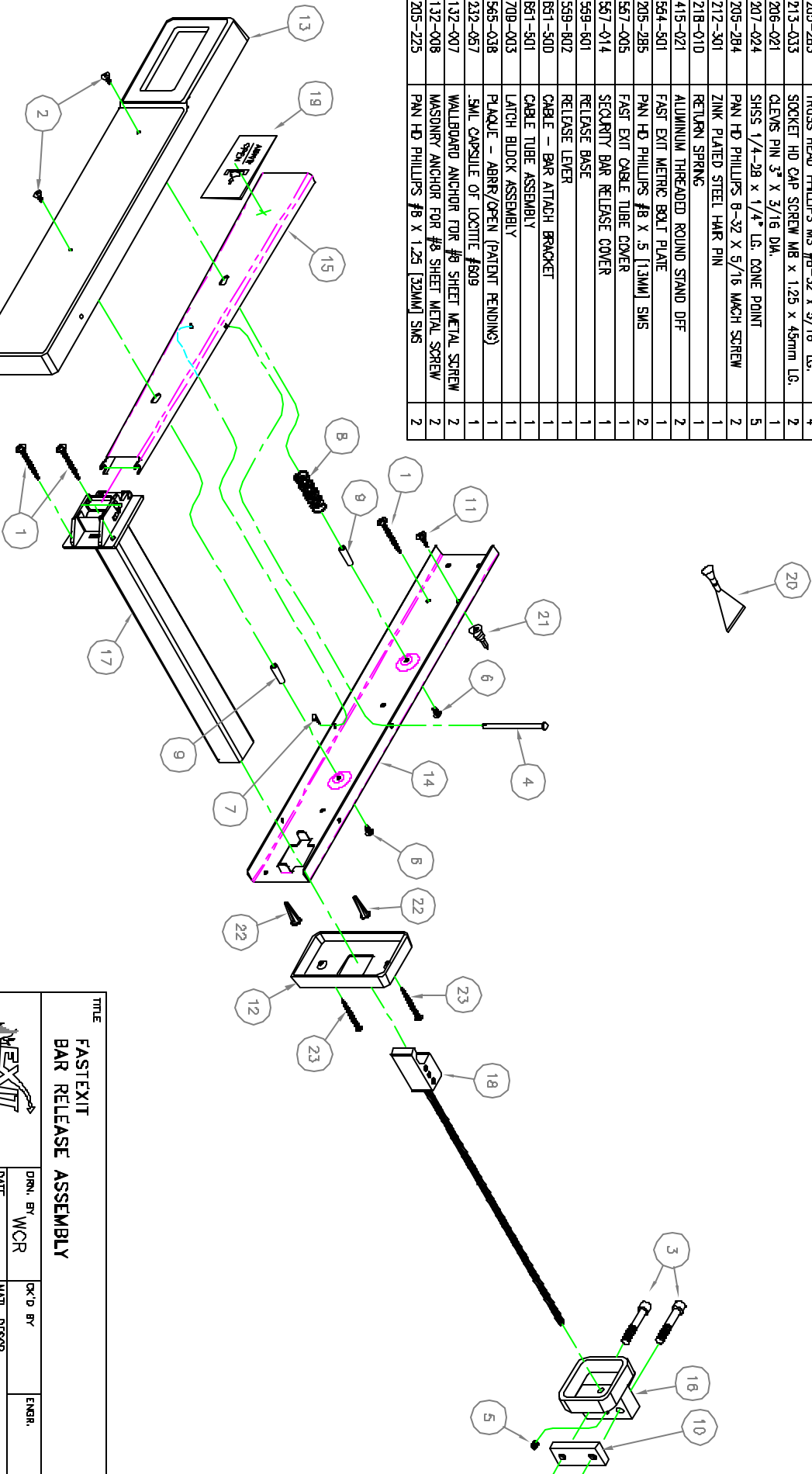


ITEM	PART NO.	DESCRIPTION	QTY.
1	205-219	PAN HEAD PHILLIPS #8 X 1.25 (43MM) SMS	8
2	205-283	TRUSS HEAD PHILLIPS WS #8-32 X 5/16" LG.	4
3	213-033	SOCKET HD CAP SCREW MB X 1.25 X 45mm LG.	2
4	206-021	CLEVIS PIN 3" X 5/16 DIA.	1
5	207-024	SHSS 1/4-28 X 1/4" LG. CONE POINT	5
6	205-284	PAN HD PHILLIPS 8-32 X 5/16 MACH SCREW	2
7	212-301	ZINK PLATED STEEL HAIR PIN	1
8	218-010	RETURN SPRING	1
9	415-021	ALUMINUM THREADED ROUND STAND OFF	2
10	584-501	FAST EXIT METRIC BOLT PLATE	1
11	205-285	PAN HD PHILLIPS #8 X .5 (13MM) SMS	2
12	587-005	FAST EXIT CABLE TUBE COVER	1
13	587-014	SECURITY BAR RELEASE COVER	1
14	589-801	RELEASE BASE	1
15	589-802	RELEASE LEVER	1
16	881-500	CABLE - BAR ATTACH BRACKET	1
17	881-501	CABLE TUBE ASSEMBLY	1
18	709-003	LATCH BLOCK ASSEMBLY	1
19	585-038	PLAQUE - BARR/OPEN (PATENT PENDING)	1
20	232-057	SMALL CAPSULE OF LOCITE #809	1
21	132-007	WALLBOARD ANCHOR FOR #8 SHEET METAL SCREW	2
22	132-008	MASONRY ANCHOR FOR #8 SHEET METAL SCREW	2
23	205-225	PAN HD PHILLIPS #8 X 1.25 (32MM) SMS	2

MATERIALS LIST



CONFIDENTIAL

This drawing contains confidential information and is the sole and exclusive property of Exit Technologies. Any reproduction and/or dissemination without the express written authorization of Exit Technologies is strictly prohibited.

TITLE
**FASTEXIT
 BAR RELEASE ASSEMBLY**

		DIRN. BY WCR	CK'D BY 	ENGR.
DATE 21 JUN 02		MATL. DESGR. NOTED		
SIZE B	SCALE NONE	NEXT ASSTY	DWG. NO. 762-010-FE	SHFT 1 OF 1
REV. 3	JOB NO.			